



# HOMER ANIMAL FRIENDS

WINTER 2021 NEWSLETTER

## HAF Board of Directors

### President

Debbie Dauphinais

### Vice President

Ashley Vecellio

### Secretary

Pat Moss

### Treasurer

Jeanette Dick

### Board Members

Pat Boone

Casey Moss

Jillian Rogers

Robin Waldvogel

Danielle Wythe

## Message From The President

**H**omer Animal Friends has had an interesting couple of COVID years – like everyone else! We would like to thank you for supporting us during these crazy times, we couldn't have done what we've done without all of you.

I'd like to share some information on what's been happening while not giving away all the information that might be presented elsewhere in our newsletter. So here goes!

Our store continues to thrive in our current location. The staff and people who provide background support, strive to find and stock products that will enrich the lives of you and your pets. These wonderful ladies were able to maintain hours during the pandemic and provide a safe environment for themselves and all of you. Thank You Ladies! They have also been working on an online presence, so if you shop online with us, please let these ladies know how it worked for you. If you're hesitant to try it alone, use it the next time you visit the store to see how it can work for you. Cathy helped me with the payment portion, on my phone I had to scrolling down a lot to find the right payment option for me. It's also nice to have somebody let us know if something isn't working so we can fix it without hearing about it through the grapevine.



Spay and Neuter continues to be an important part of our mission. Since our last newsletter (which used October 2019 data), we have provided funding for 588 spays or neuters in the amount of \$64,211.56. Incredible! As I reviewed the reports, I found it mind blowing to see that during 2020 and 2021 alone, this service helped to prevent an estimated 2,760 unwanted puppies or kittens in our service area.

This year, through October 2021, we helped 220 pets with a cost to Homer Animal Friends of \$25,312.60. This is the lowest number of pets served that we've seen in the last three years, comparing the same months – January through October - and we're attributing it to the pandemic which has made it exceedingly difficult to get appointments for elective surgeries.

*Continues on page 3*

## President's Message Cont.

Community involvement and education is another important aspect of our mission. Unfortunately, community involvement has been curtailed, again by mean old Mr. COVID. We have been involved with:

1. The Kachemak Heritage Land Trust (KHLT) and HAF have partnered on the Poopdeck Trail, it starts and ends on Pioneer Ave, with a connection down to the library. There are already leashes available, but the trail grand opening won't happen until sometime in the spring of 2022. HAF is providing leashes for those who forgot theirs, it's a loan program where you can grab a leash off the rack at either end of the trail, so you can be prepared in case you run into someone else who also has a dog on the trail. Then when you're done, feel free to either keep it or return it at the other end of the trail for someone else to use.
2. We're in the early stages of working with the City of Homer for a similar program at Bishop's Beach – yes, I know, everyone uses Bishop's Beach to let their dogs run and play. However, the parking area can be problematic. So again, the leashes will eventually be on a rack, and available for either a loan or a forever in your vehicle situation. We're just trying to make it safer for all the dogs that get to play there.
3. The food pantry was finding that people who needed their assistance could also use assistance with food for their pets. Makes sense, if you're having a rough time feeding your kids, you're probably going to feed your kids before you invest in feeding your dogs or cats. So what have we done about it? Again, through the Homer Animal Friends Store, those wonderful ladies have been busy filling gallon bags with dog and cat food. We try to use the broken bags, because they're harder to sell, but sometimes we just have to break into an undamaged one.

4. Poop Fairies have been seen around the Spit on a few occasions each year, sometimes not on the day that we planned because of poop weather, but there is always an alternate day and lots of poop to pick up! It was rumored that one bucket didn't hold as many individual's leavings since a horse had been on one of the Poop Fairy routes – yikes!

5. Education was slow last year, again because of COVID, and we're noticing some "pandemic puppies" out there. That is, pups who unfortunately didn't get the socialization like puppies from prior years, so they are often fearful of other people and other animals. The ladies who specialize in training have been finding creative ways to bring training back to our area. Thank you Ladies!

We're thankful to have made a difference in Homer largely due to the help from all of you, our board members, our store ladies, our trainers, our partners, our volunteers, and anyone else that I forgot to mention. It's been challenging but totally worth it.

Happy Holidays!

Debbie Dauphinais

President

Homer Animal Friends





# Homer Animal Friends Store

## Location

601 E Pioneer Ave  
Suite 109

## Hours

Mon-Fri 11 am - 6 pm  
Sat 11 am - 5 pm

## Phone

235-SPAY(7729)

## Store Report

2021 has proven to be our best year yet! With your support, we continue to grow and evolve as your local pet supply store. To support our community, we've added local products to our inventory this year, such as Nomar Leashes, Jeff Szarzi Bowls, Mad Lab Dog Collars, A Puppy Loves Biscuits, and The Alaskan Greeting Cards. Some of the newer brands include Ruffwear, Tall Tails Beds, and Goli Design cat collars and toys.

Not only do we want to supply you with the best pet products available, but we also want to make sure every dog and cat in Homer gets the nourishment they need. Through September 2021, we've donated over 2,000 pounds of pet food to the Homer Food Pantry. If you know of a family in need, please help us spread the word that food assistance is available for dogs and cats on Mondays every week at the Homer Food Pantry.

The pandemic has changed the way we do business in some ways. Our customers wanted curbside service for pet supplies, and we listened! We offer the option to order by phone with curbside service or in-store pickup. We also deliver to Smoky Bay air to support our communities across the bay.

We are excited to announce that our curbside service is expanding with the addition of our brand-new online store! To access it, go to [homeranimals.org](http://homeranimals.org) and click "Shop" on our home page or click our store page link on the top ribbon. We're interested in your feedback as we add photos and descriptions. Please stop by the store and let us know how we're doing!

The option is now available to recycle toys from West Paw. If your dog is a little rough on toys, we have a West Paw recycling box for their old toys. We'll take care of the rest by sending them back to West Paw to be recycled into new dog toys. Every little bit helps our environment, which is truly a win-win!



We're thankful for our customers and appreciate your continued support. We hope you have a great holiday with your pets!

*Cathy Harder*

Manager

Homer Animal  
Friends Store

# Shelter News

Season's greetings from the Homer Animal Shelter!

Cold temperatures in the area have us hoppin' down here at the shelter! But our current four-legged residents are cozy and warm while waiting for their new forever homes.

While we remain operating on an appointment-only basis, we are back to allowing people in to socialize with our animals. We just ask that the public call first, as we are still limiting the number of visitors in the building.

All said, 2021 has been another odd year of pandemic proportions, but our numbers remain consistent. From January of this year through the end of October, we have facilitated 82 adoptions; took in 120 stray dogs and cats; reunited 82 animals with their owners; and took in 36 owner surrendered animals.



Our euthanasia rates from January through October are a little higher than in the past several years at 7, which still puts us in the no-kill category for animal shelters.

The reason for the slight increase was that in the last few months, we have been helping those in our community who need to have their pets put down for medical reasons, as the veterinarians in town have been completely swamped. We have also helped by hosting a cat spay and neuter clinic, as well as a dog and cat vaccine and microchip clinic. We are here for the community, and will always help when we can.

As always, our staff, volunteers, and residents greatly appreciate the support we get from the Homer community. Whether it's pet-food donations, supplies, or simply a kind word, your generosity is what keeps us going.

Peace and love from all of us here to you and yours.

*Jillian Rogers—Director*  
*Rebecca Bartee—Assistant Manager*  
*Carly Ott—Animal Advocate*  
Alaska Mindful Paws



# Homer Dog Trainers

## Debunking Myths & Mindsets

There are many types of dog training, but most training beliefs are based in one of two philosophies, or a combination of the two.

- Traditional Training goes back for decades and is based on the lore of training. The methods have been handed down from generation to generation without any hard data to back them up. If you were to ask “Why?”, the response would be “Because it works” or “That’s how we’ve always done it.” (Sadly, it doesn’t work on *all dogs*, and as a result many are labeled stupid or stubborn and then rehomed, or relinquished to shelters, or euthanized).
- Positive methods are based on the science of learning, leaning heavily on Ivan Pavlov – Classical Conditioning, and BF Skinner – Operant Conditioning. If you ask positive trainers “Why?” they will point you to or cite the research that explains and defines the method. The philosophy and science of positive training works on all living beings, not just dogs. All Homer Dog Trainers instructors follow and teach positive methods.

There are many training myths that come out of the oral history of dog training:

1. **You can’t teach an old dog new tricks.** *This is far from the truth. Just like people, dogs can learn and are teachable for their entire lives.*
2. **His tail is wagging – he’s happy.** *A wagging tail can mean many things. A tail carried high and wagging fast indicates a dog in a high state of arousal and/or excitement. A tail carried low and wagging tentatively could be a sign that the dog is conflicted or scared. There are even different explanations for a tail that wags to the left, versus a tail that wags to the right. If you want to use the tail as an indicator of friendliness, you need to look at the entire dog. Is the body relaxed? Is the tail wagging the dog (whole body involved)? Are the eyes soft? Ears relaxed? Wagging tails are not necessarily an indication that the dog is safe to approach or pet.*
3. **My dog needs to be taught who is boss.** *We determine: when the dogs eat, when they sleep, when they get to play, when they eliminate, and when they get petted. Your dog knows you’re the boss.*



# Homer Dog Trainers

## Debunking Myths & Mindsets Continued

4. **Dogs evolved from wolves, and we should keep that in mind when training them.** *This belief comes out of flawed science. Many years ago, in order to observe wolves, some researchers took wild wolves from different packs and threw them together in order to learn about wolf behaviors. What they were actually observing were wolves from disparate packs behaving as they would when their lives were thrown into complete chaos. Some of the researchers' behavioral interpretations were incorrect and anthropomorphic. Many years later, when wolves were studied in a natural environment, it was discovered that wolf packs are family units led by a bonded pair and comprised of their offspring. There isn't much fighting that goes on because in order for the pack to survive, its members need to be healthy. Wolves injured as a result of fighting would not be able to hunt. Finally, dogs aren't wolves. Feral dogs don't form packs, they form loose associations. Feral dogs do not bond for life. Females accept multiple dogs at breeding time. Males don't help raise the young.*
5. **My dog is Alpha/Dominant.** *This comes out of the whole my-dog-is-a-wolf theory mentioned in #4. Many of the behaviors people label dominant are anything but – more the result of a lack of training or incomplete socialization. Truly dominant animals don't go looking for trouble.*
6. **Dogs need other dogs.** *Puppies need to be around other dogs in order to learn. As dogs mature, they become less interested in group play. Just like people, some dogs may be party animals and other dogs might be more interested in staying home. Most dogs need more time with their people.*
7. **I need to punish my dog for bad behaviors.** *People often think of punishment first because it stops the bad behavior – at the time of the punishment. Punishment does not instruct the dog what you would rather have them do. The dog doesn't know what else to do, and the behavior is repeated. As a result, the person needs to repeat and escalate punishment in order to get the dog to stop. Meanwhile the punishment creates anxiety in the dog, and the stress creates other undesirable behaviors. When your dog does something you don't like, ask yourself what you would rather have your dog do, then train that behavior.*

*Example: A preferred behavior to jumping up on people is sitting to greet them. Rather than scolding or pushing, ask your dog to sit before she has a chance to jump up.*

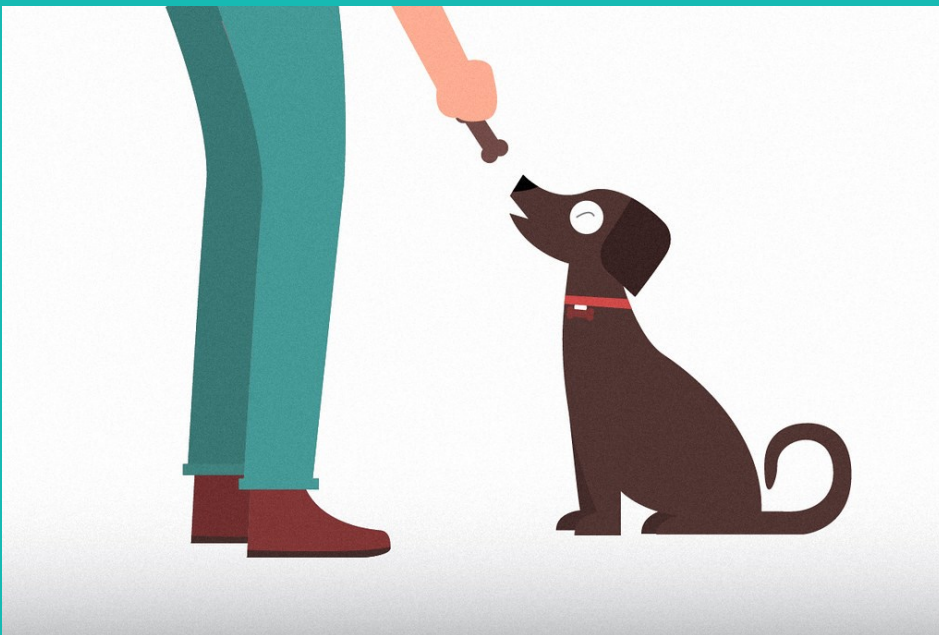


# Homer Dog Trainers

## Debunking Myths & Mindsets Continued

### NOT A MYTH, JUST A MIND SET

1. **My dog's friendly!** *(Often shouted from a distance at places like Bishop's Beach). Not all dogs are friendly. Some dogs aren't happy with overly exuberant and often rude dogs. Some dogs are actually afraid of other dogs or people, and will act defensively when approached. This is perceived as aggression, and the dog is labeled "mean" or "bad." The dog is scared and should be given space. These dogs have as much right to take a stroll next to the ocean as everyone else.*
2. **My dog is stupid, stubborn, or spiteful.** *These are descriptors of human traits, and aren't part of a dog's behavioral repertoire. If you think your dog is being stubborn, it's more likely that the dog is confused and can't figure out what you want. If the dog peed on someone's pillow, it wasn't out of spite, it might be a urinary tract infection, stress, or lack of training.*
3. **If I use food to train my dog, I will always need to carry food.** *Not if you do it correctly. Food is used to start new behaviors, and then the dog is gradually weaned off the rewards. People often make the mistake of showing the dog the food when they don't respond to the cue (command). This teaches the dog that they need to see food before they do anything.*



Pat Moss

Homer Dog Trainers



## 'Tis the Season for PET SAFETY TIPS!

### COOKIES AND CANDY

Consumption of chocolate can cause agitation, vomiting, diarrhea, high heart rate, tremors, seizures and even death.

### MACADAMIA NUTS AND WALNUTS

These nuts can cause severe lethargy, increased body temperature, vomiting, tremors, joint stiffness and the inability to walk.

### HOLIDAY DECORATIONS

Tinsel, ribbon and similar decorations can cut up the digestive tract and cause intestinal obstruction. Ornaments should be kept off low-lying Christmas tree branches.

### LIGHTS AND CANDLES

If your pet can reach them, they may be a fire hazard if knocked over.

### ALCOHOL

Alcoholic drinks may cause vomiting, disorientation, diarrhea, lethargy, lack of coordination, difficulty breathing, tremors, coma and seizures.

### GRAPES, RAISINS, AVOCADOS, ONIONS AND GARLIC

These can cause lethargy, lack of appetite and vomiting.

### ARTIFICIAL SWEETENERS

Sugarless gum and artificially sweetened treats may cause vomiting, lethargy, loss of coordination, seizures and liver failure.

### FATTY TRIMMINGS AND BONES

Pets may experience vomiting and diarrhea. Fatty foods can also promote pancreatitis. Swallowed bones can cause stomach perforation and painful constipation.

### HOLIDAY PLANTS

Holly, mistletoe and poinsettias may cause irritation, vomiting, diarrhea and heart arrhythmia in both cats and dogs.

### ELECTRICAL CORDS

If chewed, live electrical cords can cause burns in or around a pet's mouth, difficulty breathing, seizures and cardiac arrest.

HAVE QUESTIONS? PLEASE CALL YOUR VET. FOR SUSPECTED POISONING,  
YOU CAN CONTACT THE **ASPCA POISON CONTROL HOTLINE: (888) 426-4435.**

Source: <https://laughingsquid.com/holiday-safety-tips-for-pets/>

# Membership and Donations

## New Members

Deziree Valdez	Lia Calhoun	Ceil Manchester	Kathy Sarns-Irwin
Liz Ervice	Tamara Schmidt	Seyara Showalter	Jonathan Bice-Dee
Julie & Clint Pourciau	Hanna Young	Jenna Luchaco	Shellie Worsfold
Terry Bush	Emily Lints	Maggie Boone	Michaela Franklin
Robbi Mixon	Mia Robertson	Satchel Pondolfino	Jennifer Beathe
Rona Haberman	John Johansen	Jackie Dela Cruz	Clair Almond
Greg & Taylor Lathrop	Deb Evensen	Tammy Anderson	Misha Klassen
Bonnie Maroni	Carson Chambers	Sam Brogdon	Chris Theno
Waricha Thoechanthuek	Kim Sabel	Joanna Owen	Joyce Bullock
Keith Bell	Corieen Calister	Dara Ector	Karin Holbrook
Casey Greenstein	Jeremiah Emmerson	John and Melissa Anderson	

## Three Paw Members

Bethine Nehus	Clair Martin	Dena Johnson	Dixie Hart
Theresa Ross	Hal Shepherd	Jack Sibson, Jr	Jinky Handy
Pat Boone	Pete Fineo	Pat Moss	Susan Polis DDS
	Suzanne Haines	Tara Wilder	
Franco & Caroline Venuti	Mike Hawfield & Beth Garber	Bernie & Donna Gareau	
Hal Smith & Susan McLane	Guy & June Morgan	Russ & Linda Grainger	

## Four Paw Members

Donna Martin	Jack Eisaman	Jill & Phil Rogul
Jim Levine & Sue Post	Linda Reed	Richard H Leirer

## Gifts To Special Loved Ones

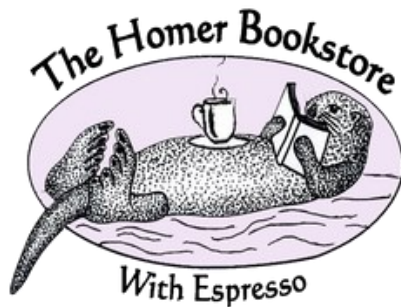
### Memory

Annie (Bear) Bradley	Charlie & Kimber	Chewy
Gracie & Teddy	Jake	Louis
Maggie	Muppet	Nemo & Mia
Sue Wohlgem	Terry Shepherd	Zoe
	Duncan	

### Honor

Schatzi	Ebby, Masie, Lover Boy, Frankie, Tasha, Waggy	Susan Pacillo
---------	---	---------------

## Business Members



Our programs and projects continue to expand because of our generous members like these businesses.

Business memberships are available for a donation of \$150 and are recognized with their name/logo in our newsletter and on our website.

For more information,  
email:  
[homeranimals@gmail.com](mailto:homeranimals@gmail.com)